

## Talk to the hand

▲ avoid signing any pre-nups just to be sure!

### Will I find 'the one'?

Wedding dresses at the ready girls! 'If you want to know when you'll meet your perfect man (or if you already have), look at the distance between your heart line and the bottom of your little finger. 'Imagine the start of the heart line to be when you were born, and the base of your finger to be 50 years old,' explains Hardeep. 'Where your relationship line cuts between your heart line and the bottom of your little finger indicates the approximate age you'll be when you'll meet your man.' If there's more than one relationship line, and they're long and deep too, then you'll have more than one long-term lover. Shorter lines are likely to be short-term relationships or a sign of a close friendship with a man. Warning: if your relationship line is faint, it might be a sign that a romance will hit the rocks. Pay your man some attention at once!

### When will I get married?

Good news! According to Hardeep, as long as you have a relationship line, you're destined to find someone! But when will he finally get the hint and propose? The answer lies in how close the relationship line is to your little finger. 'The closer it is, the later in life you'll wed,' says Hardeep. Temptations like affairs can be seen as small lines branching off the main relationship line. Hardeep warns that these lines are easy to misread, so if you're being tempted by that delicious man in marketing, you'd better go get your palm read by an expert!

### Will I have kids?

Always dreamed of having two boys and a girl? Well, check out your child lines to find out. 'Ignore small lines, it's the large, strong ones you need to be looking at,' explains Hardeep. 'If the lines are long and deep, you're likely to be painting the nursery blue; if they're shorter and fainter then you'd better pick out that

perfect pink as it's likely to be a girl.' And if you want to know when you'll hear the pitter-patter of tiny feet, you're better off visiting an experienced palmist. 'You can find out from your palm, but it's quite complex,' says Hardeep.

### How healthy am I?

Don't panic if you can't find your health line – according to

Hardeep we don't all have one. 'If you don't, chances are you'll go through life without any major health issues. But the deeper the line, the more health problems you'll have to face in your lifetime,' says Hardeep. If you're worried, visit an experienced palmist who'll be able to give you a proper picture. A deeply etched, consistent lifeline is also a sign of good health. **NW**

## Celebrity HAND & PALM READING

You've gotta hand it to 'em! How that little wave to the camera reveals more than the stars think...



Cameron knows how to handle success!



Beyoncé conquers her weak lines

### Rectangular palm & long fingers

#### ★ Star palm: Nicole Kidman

You're likely to be good-humoured and creative, but not such a great decision-maker. And like Nicole, you're witty, charming and love being around others – especially if you're the centre of attention. You listen to your heart rather than your head.

### Faint palm lines

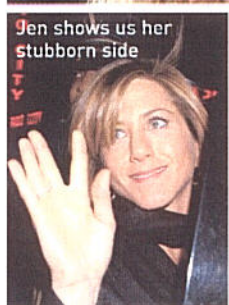
#### ★ Star palm:

#### Beyoncé Knowles

If yours are faint – and if there are lots of lines crossing – you're not too sure about where you're going in life. You tend to be insecure and not as confident as you should be. But if you're doing half as well as Beyoncé, it's probably not something you need to worry about!



Nicole takes her time down the red carpet...



Jen shows us her stubborn side

### Square palm & short fingers

#### ★ Star palm: Jen Aniston

Like Jen, you're practical and a good decision-maker. You're sure of your choices, but can be stubborn. You dislike change and you're generally ruled by your head, not your heart.

### Deep palm lines

#### ★ Star palm: Cameron Diaz

If your hand has deep palm lines without many smaller lines crossing it like Cam's, you're a confident, extroverted and outgoing person who knows what she wants and isn't afraid to go out and get it!



Ben gets the thumbs up!

### Thumb mounds

#### ★ Star palm: Ben Affleck

If you've got a fleshy, squishy thumb mound like Ben's, you're probably a passionate person, driven by your heart. If the area is firm and muscular you're more logical, headstrong and driven by your mind.